

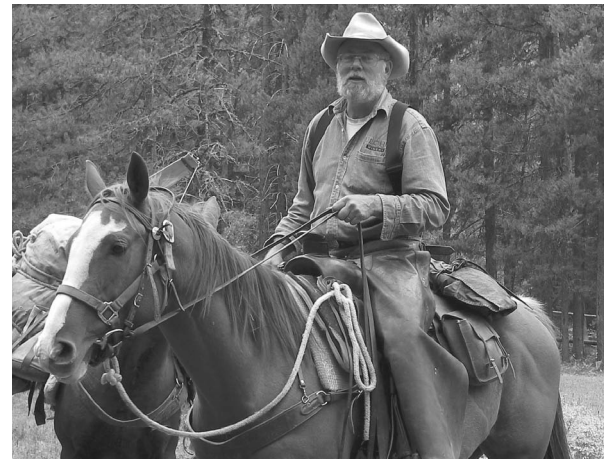
## The Presidents Corner



### Take the Challenge!

As we begin 2011, the Bob Marshall Wilderness Foundation marks its **15th year** providing volunteer service to the Bob Marshall, Great Bear and Scapegoat Wildernesses. We have come a long way in those fifteen years. We have grown from a small operation with

a part time coordinator funded by the Forest Service to a fully functional organization with two full time staff and four seasonal crew leaders. Along the way we have become a nationwide model for wilderness volunteer programs. As I look back, we have achieved



some remarkable results. We have hosted **551 volunteer projects** involving over **5,000** individuals. Foundation crews have worked with the Forest Service to maintain almost **4,300 miles of trail**. That would cover a distance from Big Prairie to New York City and back again. Our partnership with the Forest Service has stretched limited tax dollars with work valued at over five million dollars. The Foundation's work has improved wilderness access so visitors can enjoy the wild lands

(more on page 7)

“All of these volunteers have given of themselves to insure The Bob will be there for future generations to enjoy.”

## Featured Volunteer Partner: Schreiner University

► The 2011 season will mark the sixth consecutive year that students from Schreiner University in Kerrville, Texas have joined with the BMWF to tackle a trail project in the Bob. In 2006 a group of ten students and faculty travelled to the Birch Creek country on the Rocky Mountain Ranger District to install drainage structures on the Tubby Creek Trail. That first trip was a tremendous success and the partnership has grown stronger with each passing year. The original project resulted from the encouragement of Rich Lyon, a long time BMWF volunteer and friend of the university. Then Program Director

(continued on page 6)



SU group working on Monture Creek (2009)

### INSIDE THIS ISSUE:

Front Page  
*The President's Corner*  
Take the Challenge!  
Featured Volunteer Partner:  
Schreiner University

Pages 2-3  
*Program Director's View*  
Happy to Be Back in The Bob

*Financial Overview 2010*  
Volunteer Accomplishments

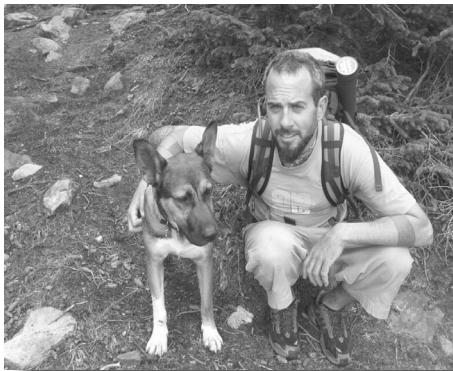
Pages 4-5  
*Annual Supporter List*  
Thank You, Thank You!

Page 6-7  
*Mark Your Calendars*  
Mountain Film Fest 2011  
Volunteer Appreciation Event  
& Member Meeting 2011  
Drink Beer for The Bob!

Back Page  
*Support Our Efforts:*  
Become A Member Today!

Visit our website  
[WWW.BMWF.ORG](http://WWW.BMWF.ORG)

# HAPPY TO BE BACK IN THE BOB!



About a month before I started this job, I went looking through the photos that had I collected during my three seasons as a BMWF crew leader. Some of them I took and others were taken by project volunteers, but our different perspectives had a lot in common. There were pictures of breathtaking peaks, fields of wildflowers, and bear tracks in the mud.

More than anything what stood out to me were the pictures of volunteers with pulaskis or crosscut saws in hand, hard hats perched, usually pretty dirty. In face after face, from trip after trip, there were a couple of kinds of expressions-either everyone is smiling like they just won free ice cream for life or they're looking proud and rugged next to their finished work.

In many ways, BMWF projects offer up a kind of rice and beans wilderness experience for outdoor enthusiasts, or maybe meat and potatoes. Either way, our projects provide participants with a host of fortifying ingredients. Even the American Hiking Society

has themed this National Trails Day (June 4th) "Made with all natural ingredients". Perhaps you're a wildflower or wildlife enthusiast; you enjoy working with your hands; maybe you want to meet some new friends who share your interests; or you can't get enough backcountry pancakes. BMWF trips have all of that with opportunities for the greenest green-horn and the saltiest old salt.

One of the coolest things about serving as a BMWF crew leader was saying hello to a group of strangers on Saturday and goodbye to a bunch of friends a week later. Many of us come to The Bob drawn by the idea of a rare place-rare for its vastness, its wild landscape, and wild inhabitants. But nearly everyone I know who's visited The Bob, whether for a single BMWF project or a lifetime of work, cites the people they meet as the most outstanding feature. And that's what's really exciting in returning to the BMWF--the opportunity to reconnect with old friends and to make a bunch of new ones.

As Fred describes in the President's Corner, BMWF volunteers have put up some pretty im-

pressive numbers in service to fellow wilderness travelers and resource managers. So many people, from so many places, have contributed over the past fifteen years to the Foundation becoming an established and effective agent within the Bob Marshall Wilderness Complex. I am grateful for the opportunity to follow on the heels of people like Carla, Paul, Shannon, and Keagan, not to mention those who are serving or have served on our Board of Directors, or our partners on each of the forests in The Bob.

Whether you're a veteran of many BMWF projects, or contemplating your first go with us, we look forward to seeing you out there this summer. We're putting together some really exciting projects for 2011, which will be listed in our March Newsletter, so when the hunger for some good work with some good folks gets to gnawing at you, pick a project (or six) and come spend some time with us.

*Nick Cheney*

Nick Cheney, Program Director



## VOLUNTEER ACCOMPLISHMENTS 2010

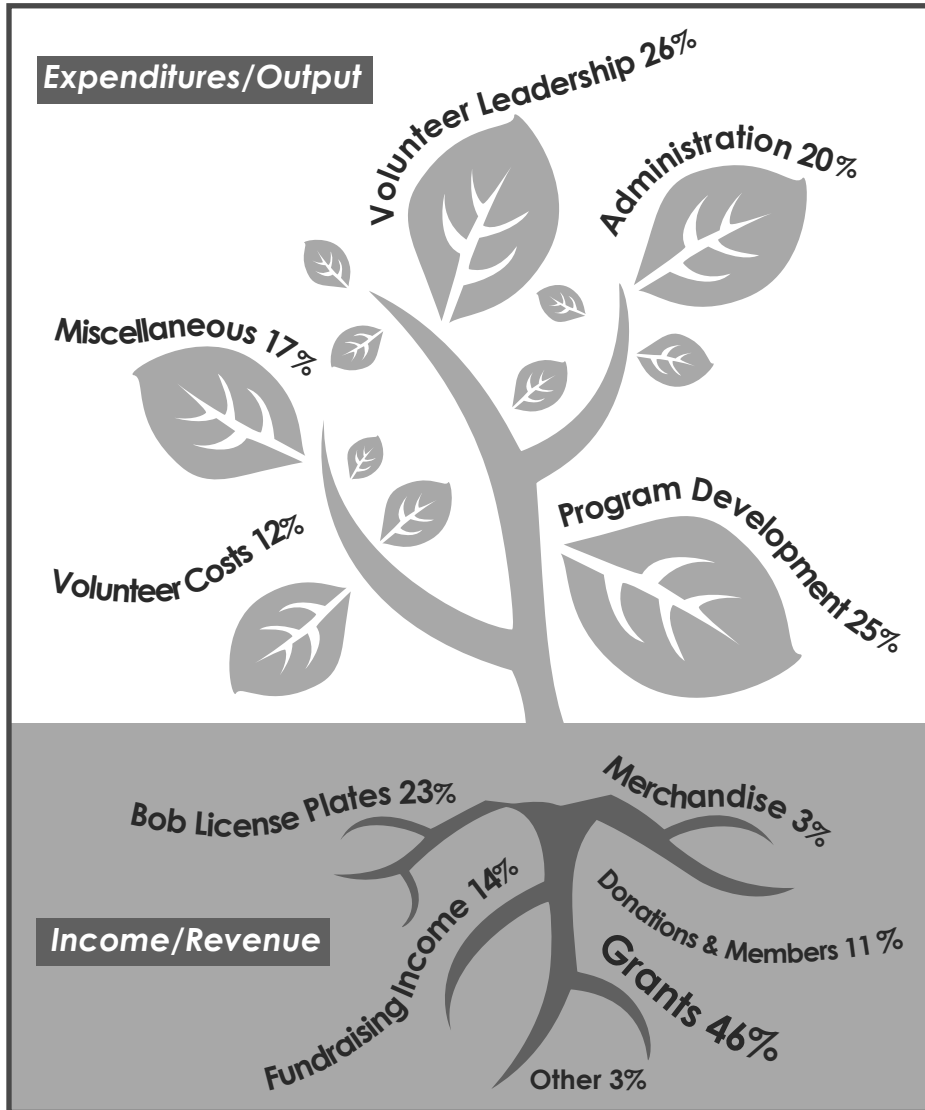
47 projects  
394 volunteers  
1,836 volunteer work days  
199 water bars maintained  
57 miles of trail brushed  
4,774 yards of tread work  
1,573 trees cleared

66 acres of weeds treated  
150 feet of puncheon replaced  
24 campsites rehabbed  
597 icy backcountry baths taken  
126 Pulaski's sharpened  
0 dinged cross cut saws  
394 new friends made

# \$329,868

Value of  
volunteer sweat,  
time & smiles!

# Financial Overview 2010



Volunteer Costs = Food, tools, gear, travel. Administration = Fundraising.  
 Program Development = project planning & coordination.  
 Volunteer Leadership = Crewleaders.  
 Miscellaneous = Advertising, website, postage, printing, insurance.

## HIGHLIGHTS

- We ended the 2010 project season with 47 volunteer projects completed and 394 volunteers participating, equaling a value of work donated at \$329,868.
- The BMWF spent \$179,591 on volunteer project expenses, volunteer leadership, project planning and coordination, and administration in 2010, which when compared to our value of accomplishments is quite the return on investment!
- Our spring fundraiser event, Telluride Mountainfilm, grossed over \$18,500 in its four nights of films making for a 22% increase from the previous year.
- We took in \$8,600 with our Voices of the Wilderness fundraiser in October, a 17% increase from 2009.
- We continue to have strong funding support with our Bob Marshall Wilderness license plate sales and growth in our Bob Squad membership numbers, successfully making our goals with your continued support.

Cadeau Foundation  
 Franchini Family Foundation  
 Recreational Trails Program  
 Flathead County Resource  
 Advisory Council

**SPECIAL THANKS**  
**2010 GRANT**  
**FUNDERS**

Montana Wilderness Association - Island Range Chapter & State Office  
 Flathead Elec. Co-op Roundup for Safety

Do you have a group of friends or family, fishing buddies, or out-of-town visitors with a desire to see The Bob and lend a hand?

### Create a custom trip with the BMWF!

You just get 4-8 people together with a willingness to learn, motivation and a good sense of humor (you have to spend the week with them after all), and we'll take care of the rest. We have a number of itineraries ranging from 2-8 days, car-camping and once-in-a-lifetime backcountry opportunities to choose from. We'll supply a wilderness crew leader, food, tools, safety gear, camp kitchen and packers to help carry in some weight!



Boy Scout Troop #1941 from Columbia Falls on Harrison Creek in 2010

For more information visit us at [www.bmwf.org](http://www.bmwf.org) or give us a call at 406.387.3808.

**GOLDEN PULASKI MEMBER**

Bayne Family Foundation  
Larry and Pamela Garlick

**CROSS CUT SAW**

Jim Sadler and Kathryn Ordway  
Kramer Family Fund  
Robin Chopus, Emerson Grill  
Nishi Shah--Soros Fund Charitable  
Foundation Match

**DOUBLE BIT AXE**

Great Northern Brewing Company  
Robert & Randee Blackstone  
Bill Stricklin  
Fred and Nancy Flint  
Gregory Kennett  
John Kuehn  
Robert Mullin--Walmart Foundation  
Charitable Match  
North Star Consulting Group, Inc.  
Richard and Jeanne Williams  
Mr. and Mrs. Robert Crawford, Jr.  
Dick & Dulcy Zoellner  
Building Bridges  
Montana Academy  
Summit Preparatory School

**SWINGING PICK**

Robert Delk  
John and Carol Santa  
Jim Cossitt  
Ingrid Akerblom  
Jim Anderson  
Anonymous  
Lou Bahin  
Betsy Bayne  
Dick and Sandra Boyce  
Bruce Boody Landscape Architect  
Adriene Cardan  
David Chesnoff  
Gail & Thomas Colman  
Julie DeBok  
Mae Nan Ellingson  
John & Melissa Phelps  
Gentry River Ranch  
Ed and Lee Ann Gottfried  
Dan and Kathleen Hedigan  
Gregory Hertz  
Halgrim Hollo  
Kevin and Deborah Horton  
Bobby and Stan Keil  
Clifford Kipp  
Steve and Sandy Kratville  
Ed Lieser  
Tim Light  
Jim & Norma Mackenzie  
Bradley and Barbara Massam  
Eleanor Morris  
Richard and Gigi Moy  
Bob & Sue PaDelford  
Steve and Barb Penner  
Maggie Doherty  
Margaret Pittman  
Chris Ryan  
Nancy Searles  
John Shaw  
Chany Reon-Ockert  
Bill Sullivan  
Lee Travis  
Brad Wood  
Scott Friskics and Jennifer Smith  
Dean Robbins  
William A. Thomas  
Robert Hayden  
Mathew McDonald--REI Employee Match  
Schreiner University

**BLAZING BOW SAW**

Stephanie Christensen  
Anonymous  
Carla and Andy Belski

Terrie Casey  
Applied Materials Matching Program  
Ann and Jim Gordon  
Dick Haberkern  
Gregory Hertz  
Sue Johnson  
Joan Johnston  
Rich Juricich  
Paul Lamb  
Sue Lefebvre  
Ed Lieser  
Carole Mackin  
John McIntosh  
Charles and Dianna Miller  
Doug and Karen Morehouse  
Robert Mullin  
Sheryl Olson  
Bob & Sue PaDelford  
Cheryl Pauli  
John and Sue Pearson  
Bruce Rupp  
Joan Sage  
Sheila Shapiro  
Dan Short  
John Sisco  
Alan Stacey  
Robert Stephens  
Hank Taylor  
Rebecca R. Williams  
Robert Stephens

# MANY THANKS!

Please help us thank our amazing  
supporters including Bob Squad  
members, donors, volunteers,  
sponsors, businesses & partners.

John MacKinnon

**HARD HAT**

Michael Bestwick  
William Carey  
Josh Howington  
Gretchen Rangitsch  
Nolan Anderson  
Gordon Ash and Susan Kemper  
Wendell Beardsley  
Joe and Anne Biby  
Jeff Brandt  
Bill D. Breyfogle  
June Burgau  
Terrie Casey  
Susan Colvin  
Barbara Davenport and Karen Beers  
Linda and Frank DeKort  
Gary and Bev Elliot  
Matt Elsaesser  
Heather Barringer--First Interstate Bank  
Employee Match  
Shannon Freix  
Harvey and Joan Goldstein  
Daniel Harper  
Susan Hawthorne  
Dennis and Marie Haywood  
Dan Hensley  
Jane Horton  
Murray Jewett and Melinda Cole  
Dianna Johnson  
Philip Johnsrud  
Theresa and Tom Kolczak  
Loren Kreck  
Joe Kroeber  
Laura Law  
Mary Ann Lower  
Nancy and Chuck Manning

John and Sandra McInnis  
Kate McMahon  
Peter and Jan Metzmaker  
William Leonard Moyer  
Tom Oswald  
Dave and Kay Owen  
Anna McCabe  
Elizabeth Paugh  
Mark Plante  
Tony and Debbie Porcarelli  
Franklin and Sun Schroeter  
Dan Short  
Chuck Stearns  
Carol Weaver and Michael Clow  
Teresa Wenum  
Whitefish Pottery  
Matthew Wilson  
Keagan and Guy Zoellner

**MEMORIAL DONATIONS**

In Memory of Brian Brekke--Anonymous  
**In Memory of Jon McBride**  
James Snapp

**In Memory of Brian Curtis Wright**

Joel Greunke  
Fox Meadow Elementary Social Committee

**In Memory of Keith Granrud**

Katherine Weyhrauch

**IN-KIND DONATIONS**

Rod McIver  
Andy Breland  
Backcountry Horsemen of the Flathead  
Charlie Russell Backcountry Horsemen  
Hammer Nutrition  
BMW Board Members

**VOLUNTEER PACKERS & OUTFITTERS**

Andy Breland, Flathead BCH  
Ralph & Keni Hopkins, Flathead BCH  
Paul Pasley, Flathead BCH  
Gary Dalen, Flathead BCH  
Ron Stuber, Flathead BCH  
Jonah Libsack, Flathead BCH  
Ron Trippett, Flathead BCH  
Janet Holter, Flathead BCH  
Jeff Brandt, Helena BCH  
Tug Liberman, Flathead BCH  
Ed Langlois- Flathead BCH  
Mark Himmel, Charlie Russell BCH  
Charlie Russell BCH Members  
Brant Palmer  
Jim Borman  
Frank Vitale & Dale Duff  
Joe Maretta, Paws Up Ranch  
Crary Outfitting  
Sue & Bob PaDelford, Outlaw Ranch  
Pat Clanton, South Fork Outfitters  
Shawn & Capri Little, Snowy Springs  
Glacier Raft Company  
Building Bridges

**PARTNERS AND SUPPORTERS**

US Forest Service  
Hungry Horse Ranger District  
Lincoln Ranger District  
Rocky Mountain Ranger District  
Seeley Lake Ranger District  
Spotted Bear Ranger District  
Swan Lake Ranger District  
Schreiner University, Texas  
Summit Prep School  
Continental Divide Trail Alliance  
Big Sky Bible Camp  
Boy Scout Troop #1941 Columbia Falls, MT  
Boy Scout Troop #1945 Polson, MT  
National Smokejumper Association  
American Hiking Society



**NOW ACCEPTING APPLICATIONS!**

*"The program places professional working artists in various disciplines, media, and styles in remote forest cabins for five- to seven-day stays"*

We have joined with the Flathead National Forest, Swan Ecosystem Center and the Hockaday Museum of Art to present the Artist\*Wilderness\*Connection artist-in-residence program again in 2011.

The program places professional working artists in various disciplines, media, and styles in remote forest cabins for five- to seven-day stays followed by a public presentation related to the residency. The experience will focus on the Bob Marshall, Great Bear and Mission Mountain Wilderness Areas, with opportunities for artists to reside in cabins in or near designated Wilderness.

From now through February 28th, 2011 Montana artists are invited to apply for the Artist\*Wilderness\*Connection program. The program will host three artists in cabins on the Flathead National Forest during the months of August and September.

To download an application, visit the Hockaday Museum of Art web site at [www.hockadaymuseum.org](http://www.hockadaymuseum.org). For more information, please contact Keagan Zoellner with the BMWF at 406-387-3847 or Teresa Wenum with the Flathead National Forest at 406758-5218.



**Help us out in 2011!**

We offer weeds projects with and without herbicides, float based trips and GPS mapping. Check out the spring newsletter for a full listing of trips.

- Building Bridges
- Sinopah House
- Montana Conservation Corps
- Backcountry Horsemen of Montana
- The Boone and Crockett Club
- Montana Weed Control Association
- BMWV Board Members

**VOICES OF THE WILDERNESS EVENT SPONSORS**

- Hockaday Museum of Art
- Glacier Bank
- Big Sky Brewery
- A Simple Chef Catering
- Rocky Mountain Wine Company
- Coffee Traders

**ARTIST & SILENT AUCTION DONORS**

- Rag and Stone Jewelry--Erin Hawley
- Becky Lomax
- Beth Hodder
- Stacey Bengtson
- Jennifer Smith
- Scott Friskics
- Donna Davis
- Rick Bass
- Jane Latus Emmert
- Bill Stricklin
- ECCE Fine Art Gallery
- Robin Chopus
- Lee Seacrest
- Keegan Rumsey
- Ryan Smith
- Jane Kleinschmidt
- Robert D. Starling
- Pam Little
- Barb Penner
- C Kjell Peterson
- Carlos Florey
- Earthstones Pottery
- Molly A. Merica
- Craig Muderlack
- Gold Creek Jewelry
- Heidi Haugen Pottery

- Nan Smalley
- Fred Flint
- Nancy Flint
- Ann Beeman
- George Garrity
- Mark Ogle
- Allen Jimmerson
- Robert Markle
- Lydia Flemming
- Madelyn Lieser
- Hailey Melander
- Bob and Fran Flint
- Kat Gebauer
- Julie Wulf
- Somer Treat
- Salena Beckwith
- Jim Clayborn
- Whitefish Pottery
- Pete Thomas
- Walking Man Frame Shop
- Lois Sturgis
- Persimmon Gallery
- Dave Marx
- Taylor Hopkins
- Ian Cameron
- Glacier Frame Shop
- Monte Dolack
- Glacier Frame Shop
- Bookworks
- Keni Hopkins
- Nancy Searles
- Karin Connelly
- Danielle Taylor
- First Best Place Taskforce

**MOUNTAIN FILM AND EVENT SPONSORS**

- O'Shaughnessy Center
- Myrna Loy Center
- Emerson Center for the Arts and Culture
- Lewis and Clark Interpretive Center
- Whitefish Credit Union
- Glacier National Park Fund
- Jim Sadler and Kitty Ordway

- Gianforte Family Charitable Trust
- Rocky Mountain Outfitter
- Glacier Raft Co
- Patagonia Outlet
- Snowy Springs Outfitters
- Outfitters Supply, Inc.
- The White Room
- Mountain Hardwear
- Izaak Walton Inn
- Montana Raft Co.- Glacier Guides
- Northern Lights Trading Company
- Sweet Loretta's
- Trailhead Supply
- Outfitters Supply, Inc.
- Three Forks Grille
- The Buffalo Café
- Hill Botanical
- Whitefish Mtn. Ski Patrol
- Cimarron Café and Catering
- Bad Rock B and B
- Montana Raft Co.- Glacier Guides
- Whitefish Mountain Resort
- Bert and Ernie's Restaurant
- Red Ants Pants
- Whitefish Mountain Resort
- Great Harvest Bread
- Spotted Bear Ranch
- Mystery Ranch Backpacks
- The North Face
- Mike and Sue Dailey
- The Emerson Grill
- The Emerson Grill North
- Gentry River Ranch
- The Real Food Store
- Becky Lomax
- Rocky Mountain Transportation
- River Design Group
- First Interstate Bank
- Ed Lieser LLC
- Indian Uprising Gallery
- St. Joseph's Medical Center
- Chaco

# MARK YOUR CALENDARS



## MOUNTAINFILM FESTIVAL ON TOUR

An independent documentary film festival. A place to learn, be inspired and celebrate indomitable spirit. Come and check it out!

A FUNDRAISER FOR THE BOB MARSHALL WILDERNESS FOUNDATION  
CALL 406.387.3808 FOR MORE INFORMATION • WWW.BMWF.ORG

SATURDAY, APRIL 16<sup>th</sup>  
GREAT FALLS, MT  
LEWIS AND CLARK INTERPRETIVE  
CENTER

SUNDAY, APRIL 17<sup>th</sup>  
BOZEMAN, MT  
EMERSON CENTER FOR THE  
ARTS & CULTURE

MONDAY, APRIL 18<sup>th</sup>  
HELENA, MT  
MYRNA LOY CENTER

TUESDAY APRIL, 19<sup>th</sup>  
WHITEFISH, MT  
O'SHAUGHNESSY CENTER

**WE ARE LOOKING FOR  
EVENT SPONSORS**  
IF YOUR BUSINESS IS INTERESTED  
please call KEAGAN ZOELLNER  
at 406.387.3847.

## DRINK BEER FOR THE BOB!

Coming in March!  
Great Northern Brewing Whitefish, MT

Show your support for The Bob  
and enjoy a few brews..



Proceeds from pints to benefit the Bob Marshall  
Wilderness Foundation and support trailwork  
and weeds projects in the wilderness.

## BIG THANKS

### VOLUNTEER APPRECIATION & MEMBER MEETING

WEDNESDAY, FEBRUARY 23<sup>TH</sup> · 6:30PM

GREAT NORTHERN BREWERY  
2 CENTRAL AVE WHITEFISH, MT

COMPLIMENTARY DRINKS & SNACKS · 2010 SLIDESHOW · AWARDS

Please contact BMWF with questions at 387.3808 or email [program@bmwf.org](mailto:program@bmwf.org).

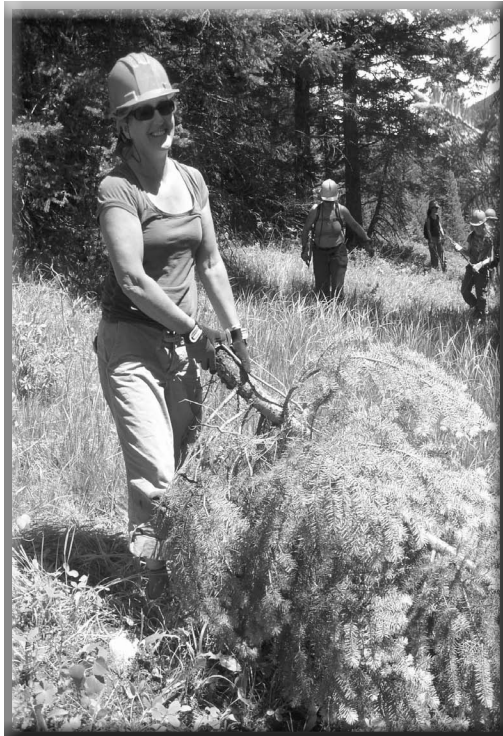
## SCHREINER UNIVERSITY CONTINUED.....

Paul Travis joined with SU Project Leader Micah Wrase to develop the agreement that has resulted in such sustained success. The BMWF trip is organized by the University's Mountaineer Adventure Program (M.A.P.), which "offers an opportunity for students to reach outside the box and embark on the volunteer adventure trip of a lifetime." Students must apply for the limited spaces available each summer and the popularity of the trip has been quite strong, with more applicants than opportunities. For those who have participated, the projects have been a good place to hone team-building skills and develop leadership actively through service. Schreiner groups have worked on several of the districts in the Wilderness Complex, sampling a variety of terrain and trail projects.

Most projects have been a week long with a day off in the middle for exploration and relaxation. Emphasis has been placed on giving group members a chance to work on outdoor skills such as fly fishing that may result in a lifetime of personal fulfillment and an enhanced sense of stewardship.

We at the Bob Marshall Wilderness Foundation would like to thank Schreiner University for five great summers so far while looking forward to many more. This is just one example of how we all can benefit from working together in The Bob and we encourage other groups out there to contact us to develop similar partnerships. Happy Trails!

that belong to all of us. In doing so, we have helped preserve our western traditions of hiking, riding and hunting in the vast open spaces that make Montana so special. We have promoted wilderness stewardship by restoring damaged sites, eradicating noxious weeds and preserving historic facilities. Our work contributes to the local economy by improving backcountry opportunities for hospitality and outfitter businesses. We promote active wilderness stewardship. Over the years, Foundation volun-



teers have had a unique opportunity to see the amount hard physical work it takes to maintain the pristine conditions we all value in The Bob. Our partnerships with youth groups have given many young people their first exposure to wilderness and wilderness stewardship. As they work, they learn responsibility and the simple satisfaction of plain hard physical labor. All these volunteers have given of themselves to insure the "Bob" will be there for future generations to enjoy. It is this desire to enjoy and preserve our wild land heritage that unites us all in the Bob Marshall Wilderness Foundation. The Board of Directors, general membership, partners, individual volunteers and Forest Service employees all want to give back to this special place that means so much to so many. We need your support and help to

continue our mission of fostering wilderness stewardship skills and education through volunteer opportunities.

There are many ways you can do your part in preserving The Bob for future generations. Sign up for a project in 2011. Volunteer to serve on one of our many foundation committees or perhaps on the Board of Directors. Contribute financially by becoming a member, through annual and planned giving, by attending and contributing to our fund raising events. Take the challenge! Be part of the legacy! I'll see you on the trail,

*Fred Flint - BMWF Board President*

Monthly Giving Program  
Need a More Convenient Way to Give?

Workplace Giving  
Double your donation this year by asking your employer about  
Workplace Giving.

Planned Giving or Bequests  
Help create an enduring legacy well into the future with your planned gift.

Contact our office at 406-387-3847 or [exec@bmf.org](mailto:exec@bmf.org) and we'll get you started on your giving program today.



**OFFICERS AND BOARD OF DIRECTORS**  
FRED FLINT, PRESIDENT  
JOHN PHELPS, VICE PRESIDENT  
ED LIESER, TREASURER  
MEG KILLEN, SECRETARY  
GREG SCHATZ  
RALPH HOPKINS  
STEVE PENNER  
MAGGIE DOHERTY

+

**STAFF**  
KEAGAN ZOELLNER,  
EXECUTIVE DIRECTOR  
[EXEC@BMWF.ORG](mailto:EXEC@BMWF.ORG)

NICK CHENEY,  
PROGRAM DIRECTOR  
[PROGRAM@BMWF.ORG](mailto:PROGRAM@BMWF.ORG)

+

**CONTACT US**  
PO BOX 190688  
HUNGRY HORSE, MT 59919  
406.387.3808 P  
406.387.3889 F

+

**MISSION STATEMENT**  
THE BOB MARSHALL WILDERNESS FOUNDATION ASSISTS IN MAINTAINING AND RESTORING THE TRAIL SYSTEM OF THE BOB MARSHALL WILDERNESS COMPLEX WITH NATIONAL GROUPS, YOUTH GROUPS AND INDIVIDUAL VOLUNTEERS. WE FOSTER WILDERNESS STEWARDSHIP SKILLS AND EDUCATION THROUGH VOLUNTEER OPPORTUNITIES IN MONTANA'S PREMIER WILDERNESS AREA AND SURROUNDING WILD LANDS.

+

**GET INVOLVED**  
ARE YOU INTERESTED IN DOING MORE? JOIN A BOARD COMMITTEE, HELP WITH FUNDRAISING EVENTS, STUFF ENVELOPES, CAMP COOK? THERE IS SOMETHING FOR EVERYONE.

CALL US: 406.387.3808  
[WWW.BMWF.ORG](http://WWW.BMWF.ORG)




**BOB MARSHALL WILDERNESS FOUNDATION**  
 PO Box 190688 • HUNGRY HORSE, MT 59919  
 406.387.3808 PHONE • 406.387.3889 FAX • WWW.BMWF.ORG

NONPROFIT ORG  
 USPOSTAGE  
**PAID**  
 KALISPELL, MT  
 59901  
 PERMIT NO. 20

Become a Member of the Bob Marshall Wilderness Foundation and become a member of the

# THE BOB SQUAD



## I WANT TO JOIN THE BOB SQUAD!

Enclosed is my membership of \$\_\_\_\_\_.

**MEMBERSHIP LEVELS**

\$1000 Golden Pulaski     \$100 Swinging Pick  
 \$500 Cross Cut Saw     \$50 Blazing Bow Saw  
 \$250 Double Bit Axe     \$25 Hard Hat

**BOB MARSHALL WILDERNESS FOUNDATION MEMBER**

▶ To say thank you, we publish an annual donor list in our Trails Newsletter. \_\_\_\_\_ I would like to remain anonymous.  
 ▶ With my gift of \$100 or more please send me "The Bob" tee featuring Bob Marshall himself, olive green.  
 (Women's tees fit very snugly; we recommend ordering one size up from your normal size.)  
 Men's (circle one): Med Lrg XL XXL OR Women's (circle one): Sm Med Lrg XL

Name: \_\_\_\_\_

This is a  Gift Membership for someone else or a  Memorial Donation? Name: \_\_\_\_\_

Address: \_\_\_\_\_ City, State: \_\_\_\_\_ Zip: \_\_\_\_\_

Phone: \_\_\_\_\_ Email: \_\_\_\_\_

Bob Marshall Image Courtesy of The Wilderness Society

Please make checks to BMWF; do not mail cash. Upon receipt of donation, you will receive a letter for tax purposes. Consult your tax advisor.  
 You can also make a donation with your credit card or debit card online at [www.bmwf.org](http://www.bmwf.org) > Support the BMWF.